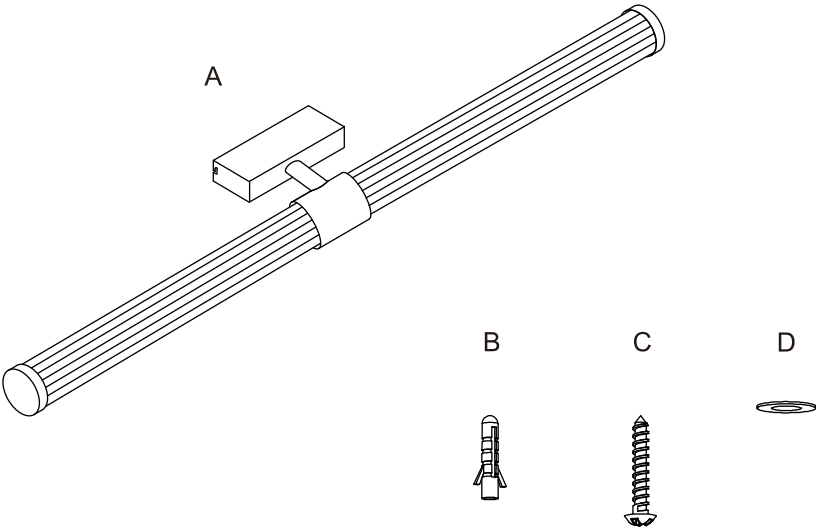


Package contents (parts are not to scale):



Part	Description	Quantity
A	Fixture body with wire	1
B	Wall expansion particle(Φ8*L35mm)	2
C	Cross pan head self-tapping screw (ST4*L42mm)	2
D	Washer	2

Light source

Max. LED 12W 1400Lumen 3000K

(Lamp gurantee: 3 years,LED lifetime: 30000 hours)

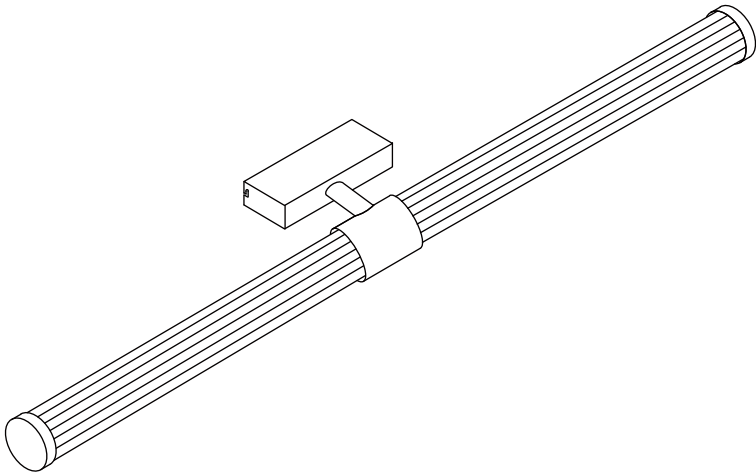
Care and Cleaning

EXTERIOR MAINTENANCE

1. To clean the outside of the fixture, use a dry or slightly dampened clean cloth (use clean water, never a solvent) to wipe the surface of the fixture.
2. Do not use any cleaners with chemicals, solvents or harsh abrasives. Use only a dry soft cloth to dust or wipe carefully.

INTERIOR WALL LAMP (IP44)

Art Nr. 81212-065-71,81212-065-20

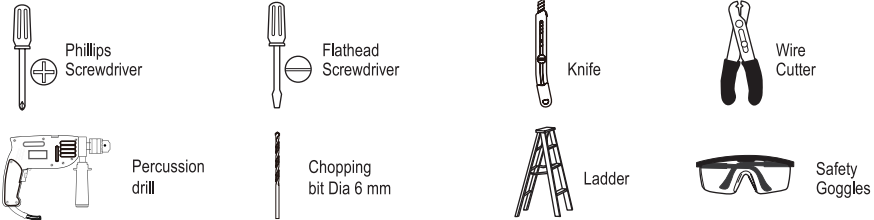


Pre-Installation

PLANNING THE INSTALLATION

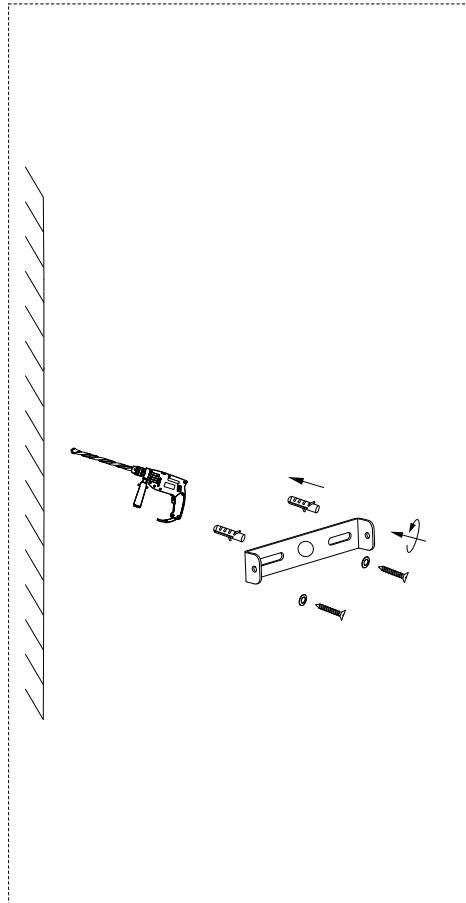
Read all instructions before assembly and installation. Before starting installation of the fixture or removal of a previous fixture, disconnect the power by turning off the circuit breaker or by removing the fuse at the fuse box. To avoid damaging this product, assemble it on a soft, non-abrasive surface such as carpet or cardboard.

TOOLS REQUIRED

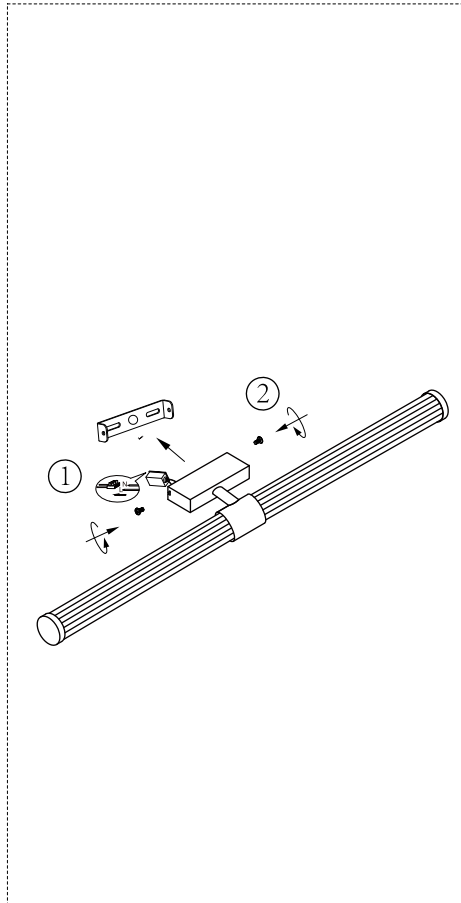


Installation

Step 1.

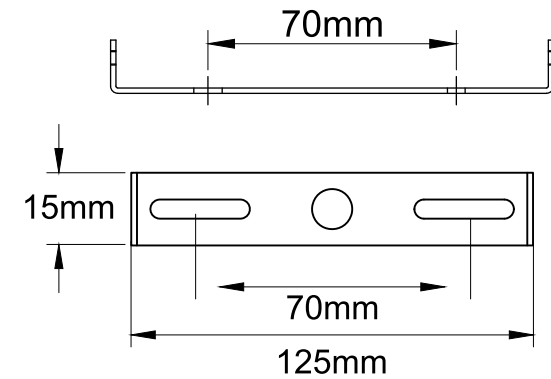


Step 2.

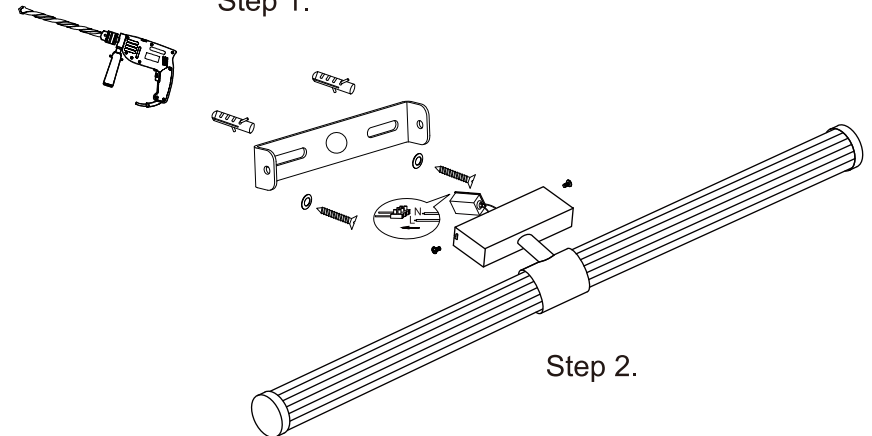


Installation (continued)

Mounting bracket size (Unit millimeter)



Step 1.



Step 2.

Operation

- ☐ Turn on power at the circuit breaker or fuse box.
- ☐ Turn the light switch on to activate the fixture.